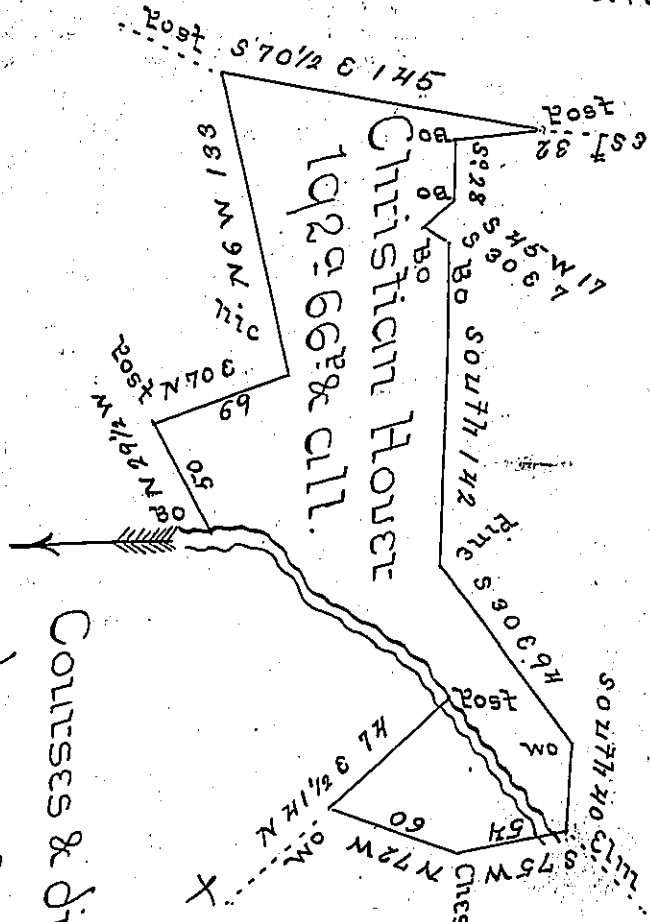


C 207-81
Joseph Shoemaker

George Hoover

C 90-448



A 75-123

Cigness Kyle

James Shields
C 202-114

Courses & distance
down $\frac{1}{2}$ Creek

- 1. N 44 W 10
 - 2. N 54 W 75
 - 3. N 45 W 34
 - 4. N 51 W 20
- Total 142.25

Survey to Christian Hoover on the 20th day of April 1805 the above described Tract of Land containing one hundred and Ninety two acres & sixty six perches & allowance of six Percent & situate in Allegheny Township Armstrong County and on the North side of Crooked Creek By Warrant of 17th August 1802 -

Geo. Ross DS

Saml Cochran Esq^r }
S. J. of Pennsa^a }

IN TESTIMONY that the above is a copy of the original remaining on file in the Department of Internal Affairs of Pennsylvania, made conformably to an Act of Assembly approved the 16th day of February, 1833, I have hereunto set my Hand and caused the Seal of said Department to be affixed at Harrisburg, this tenth day of May 1905.

Isaac R. Brown
Secretary of Internal Affairs.